

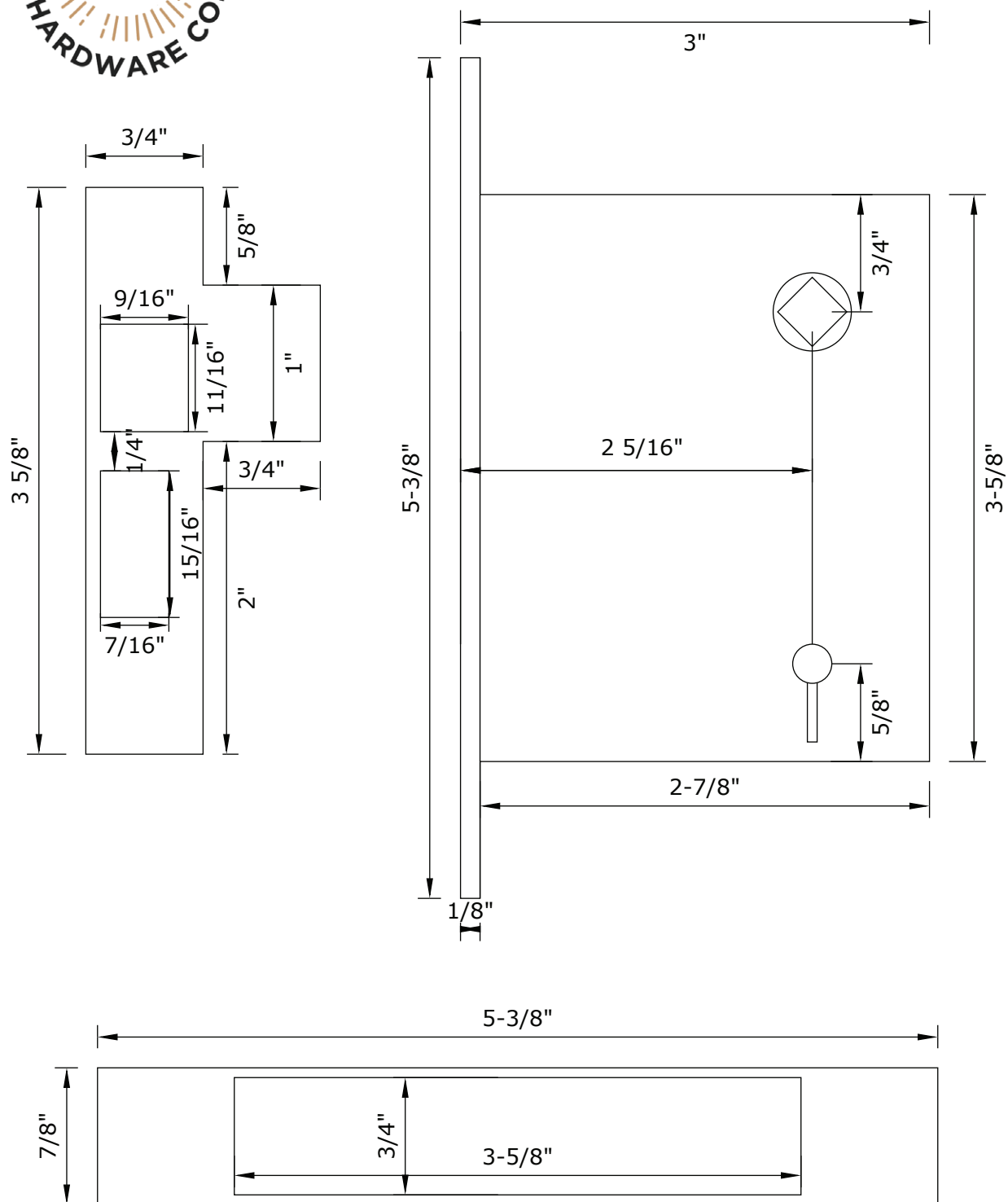
Diagrams/Specifications

Mortise lock	14A-1
Privacy mortise lock	14A-2
Broken leaf mortise lock	14A-3
Oriental mortise lock	14A-4
Potted flower mortise lock	14A-5
Rice mortise lock	14A-6
Pocket door lock	14A-7
Broken leaf pocket door lock	14A-8
Rice pocket door lock	14A-9
Jamb bolt	14A-10
Edge pull	14A-11
Baldwin entry lock	14A-12
Ball catch	14A-13
Roller catch	14A-14
Passage & privacy latch	14A-15
Tubular single cylinder deadbolt	14A-16
Tubular double cylinder deadbolt	14A-17
Reversible mortise lock instructions	14A-18
Installation tools	14A-19
Mortise lock installation	14A-20
Narrow french door rim lock	14A-24
Door dimensions for hardware placement	14A-25



Interior Mortise Lock

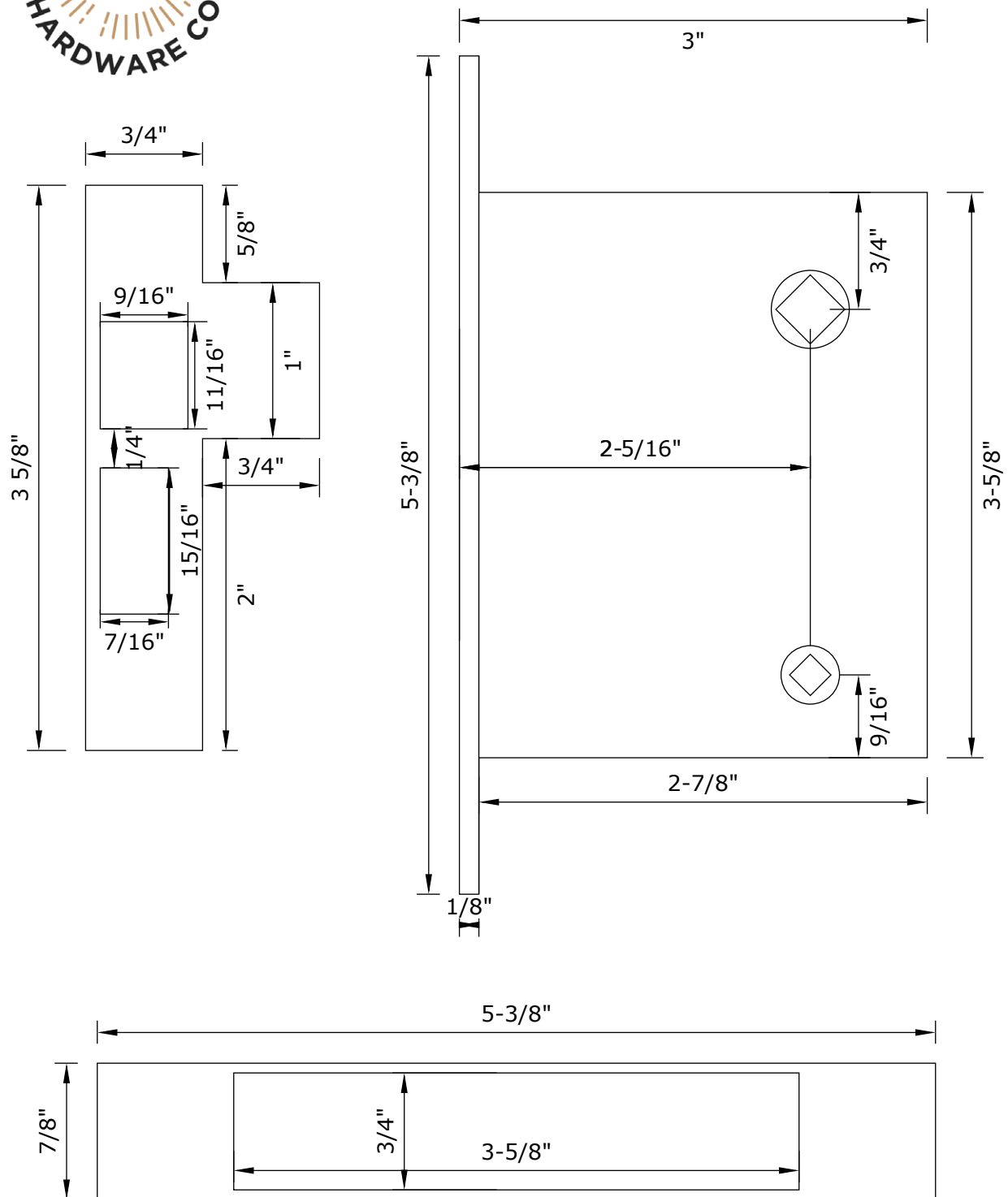
(Actual Size)





Privacy Mortise Lock

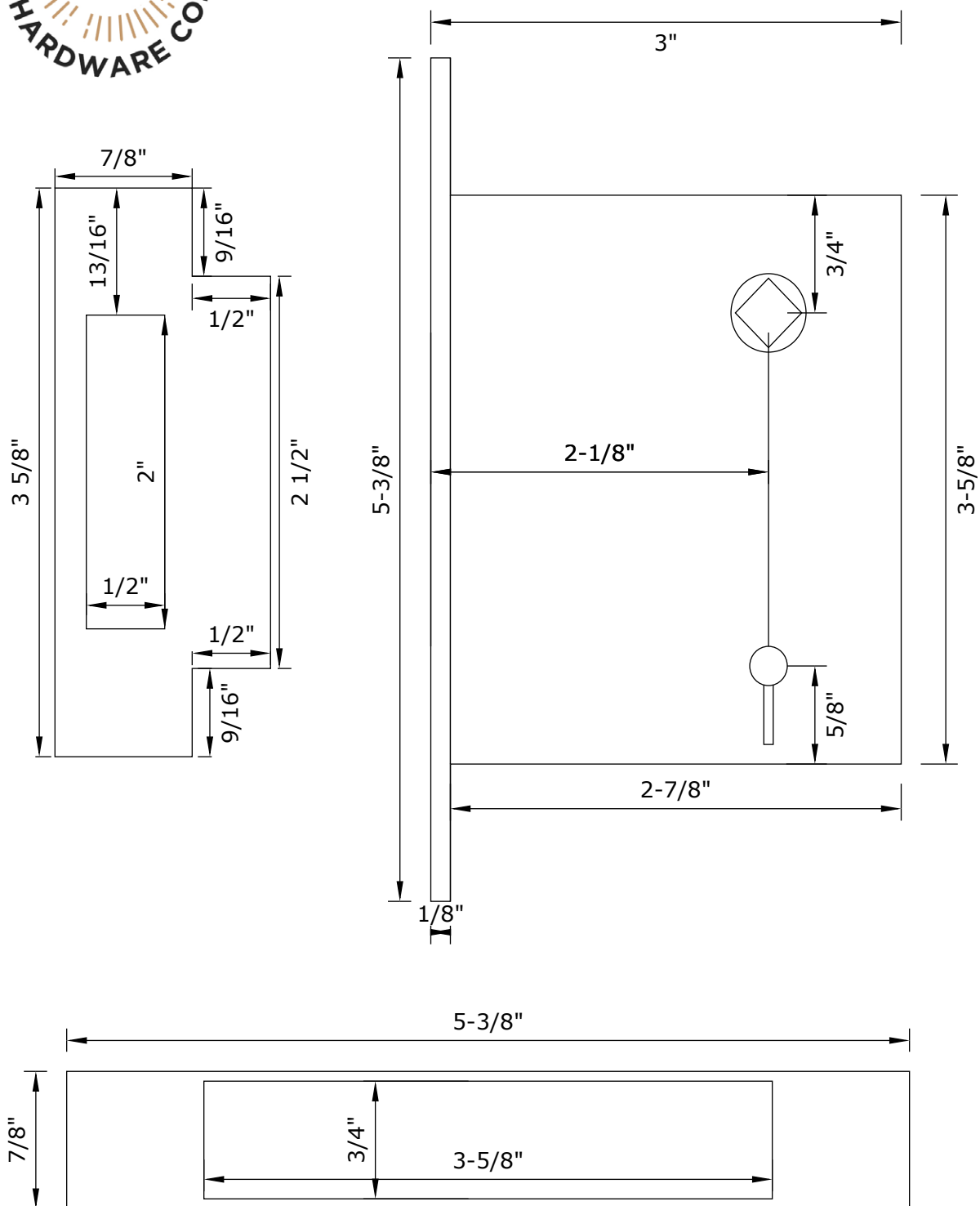
(Actual Size)



***Installation tip:** Cut turn spindle to fit only $\frac{1}{2}"$ into the turn hub. This allows a screw driver to be used on the exterior side for emergency access.

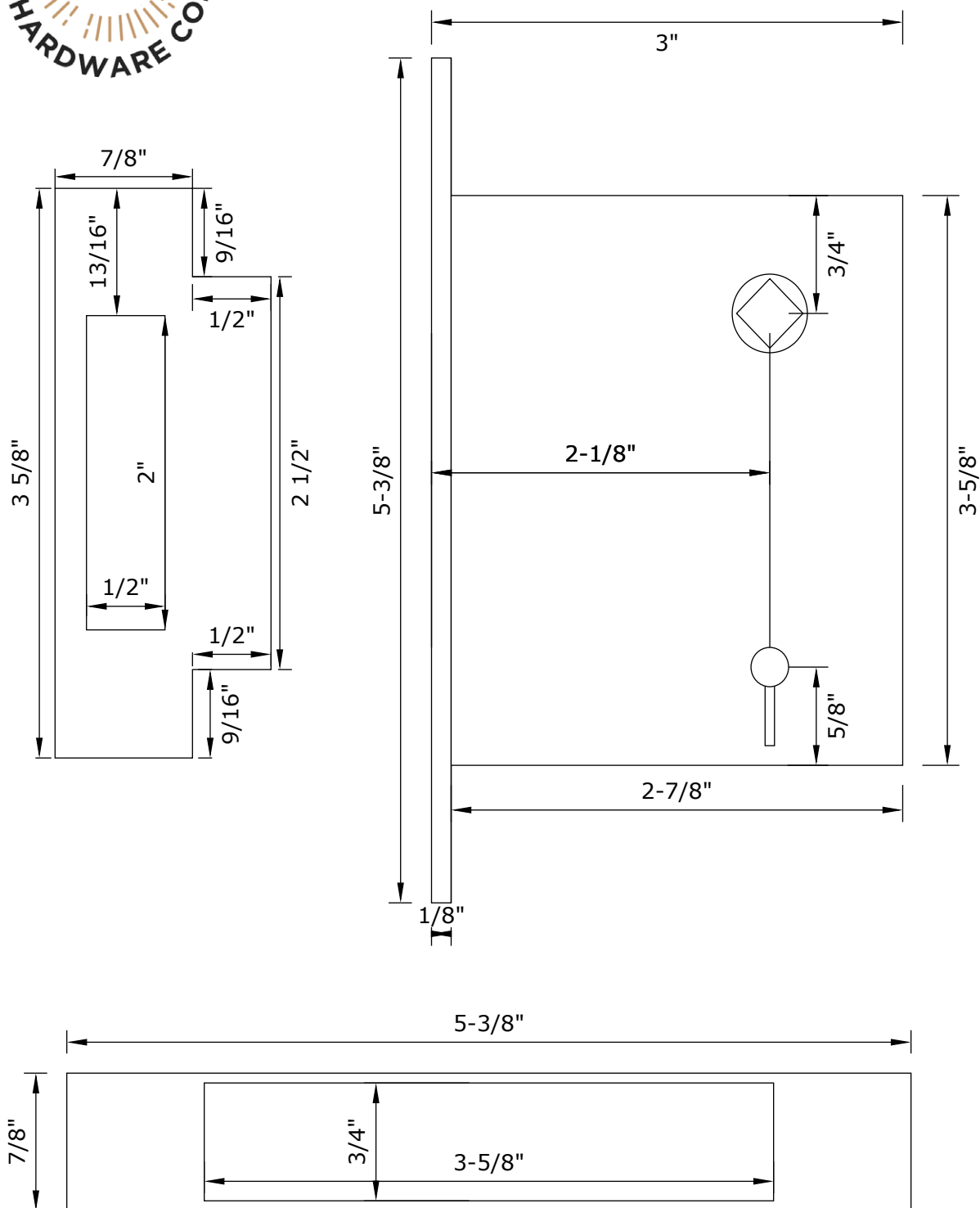


Oriental Mortise Lock



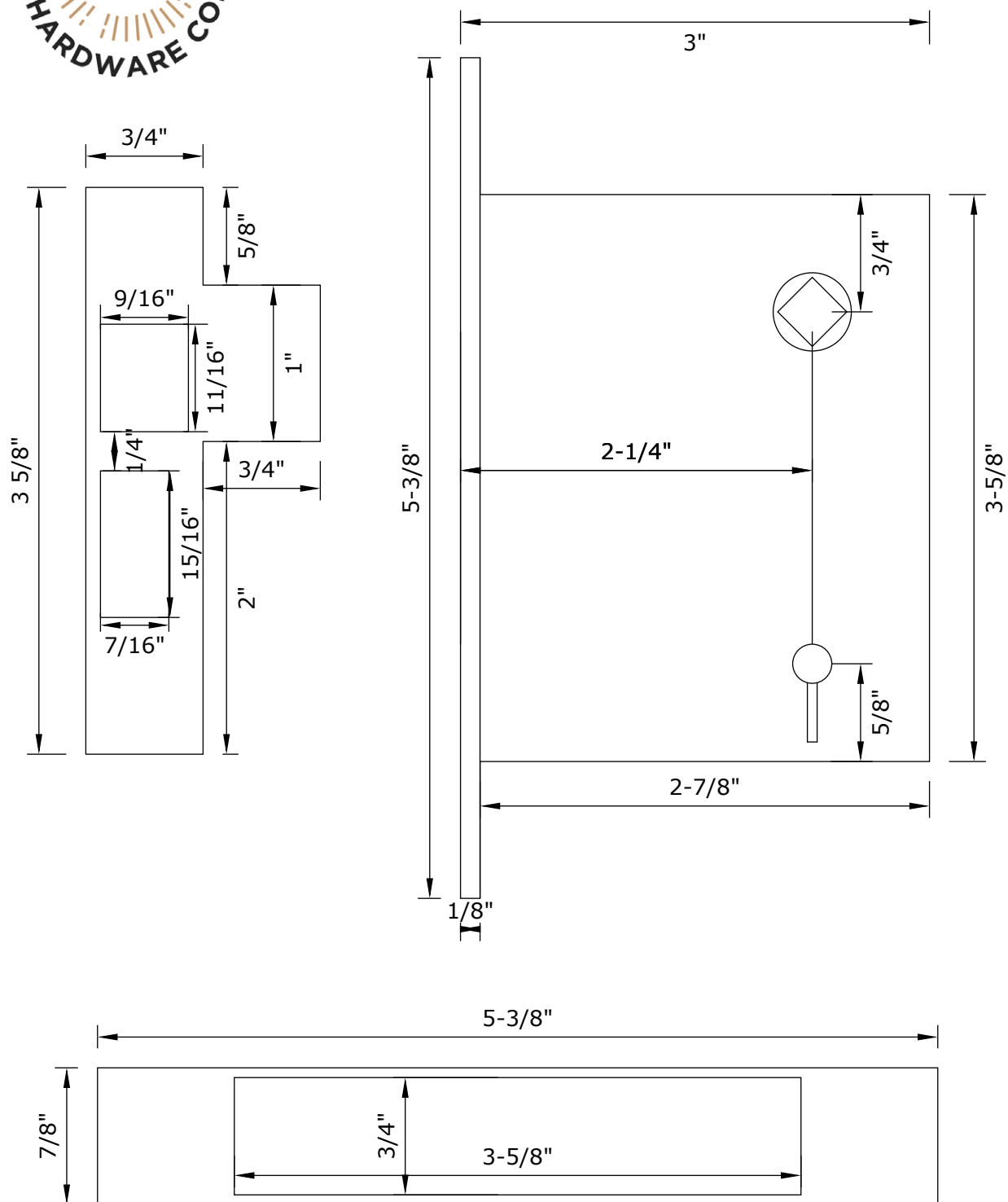


Potted Flower Mortise Lock



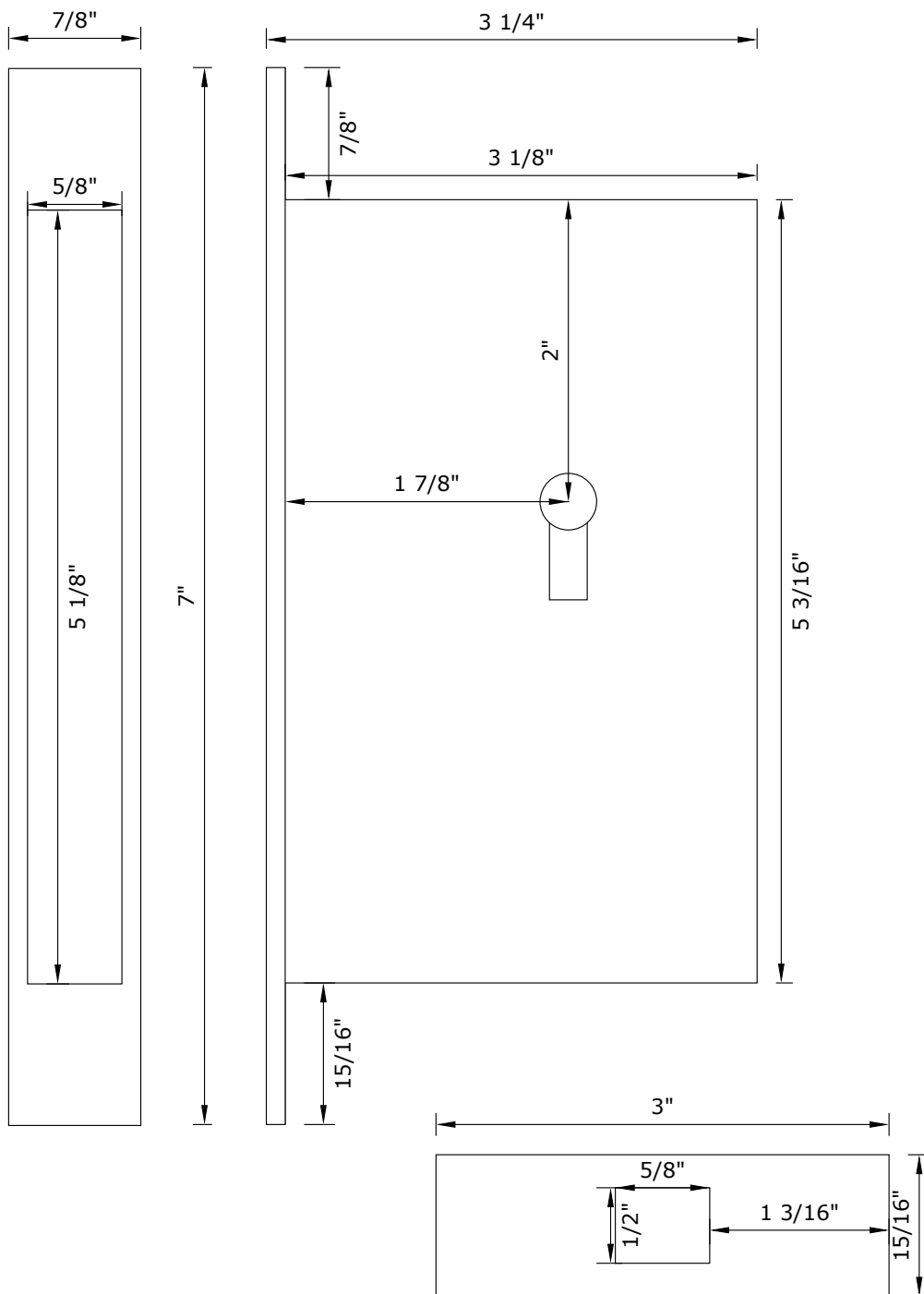


Rice Mortise Lock



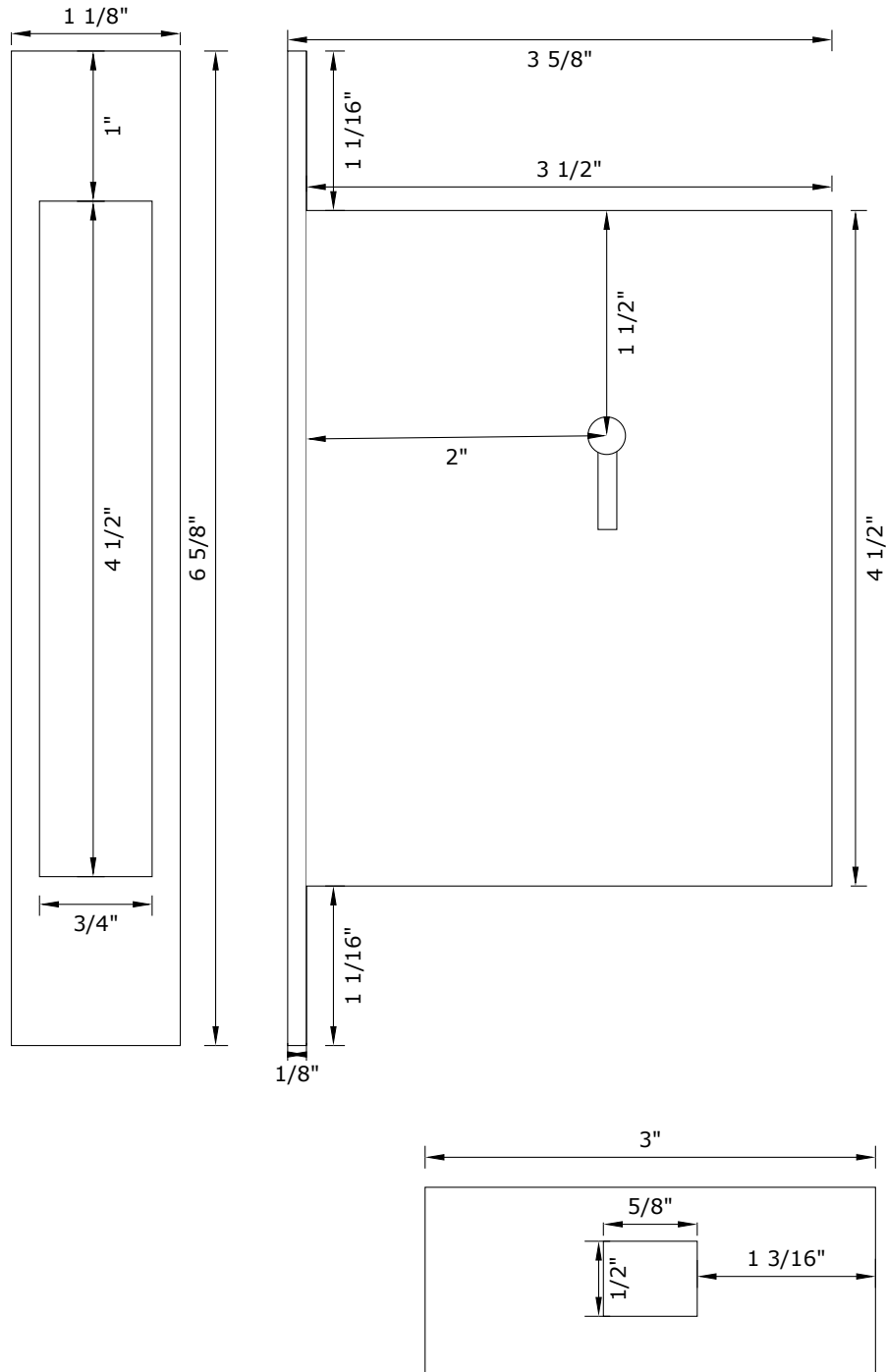


Pocket Door Lock



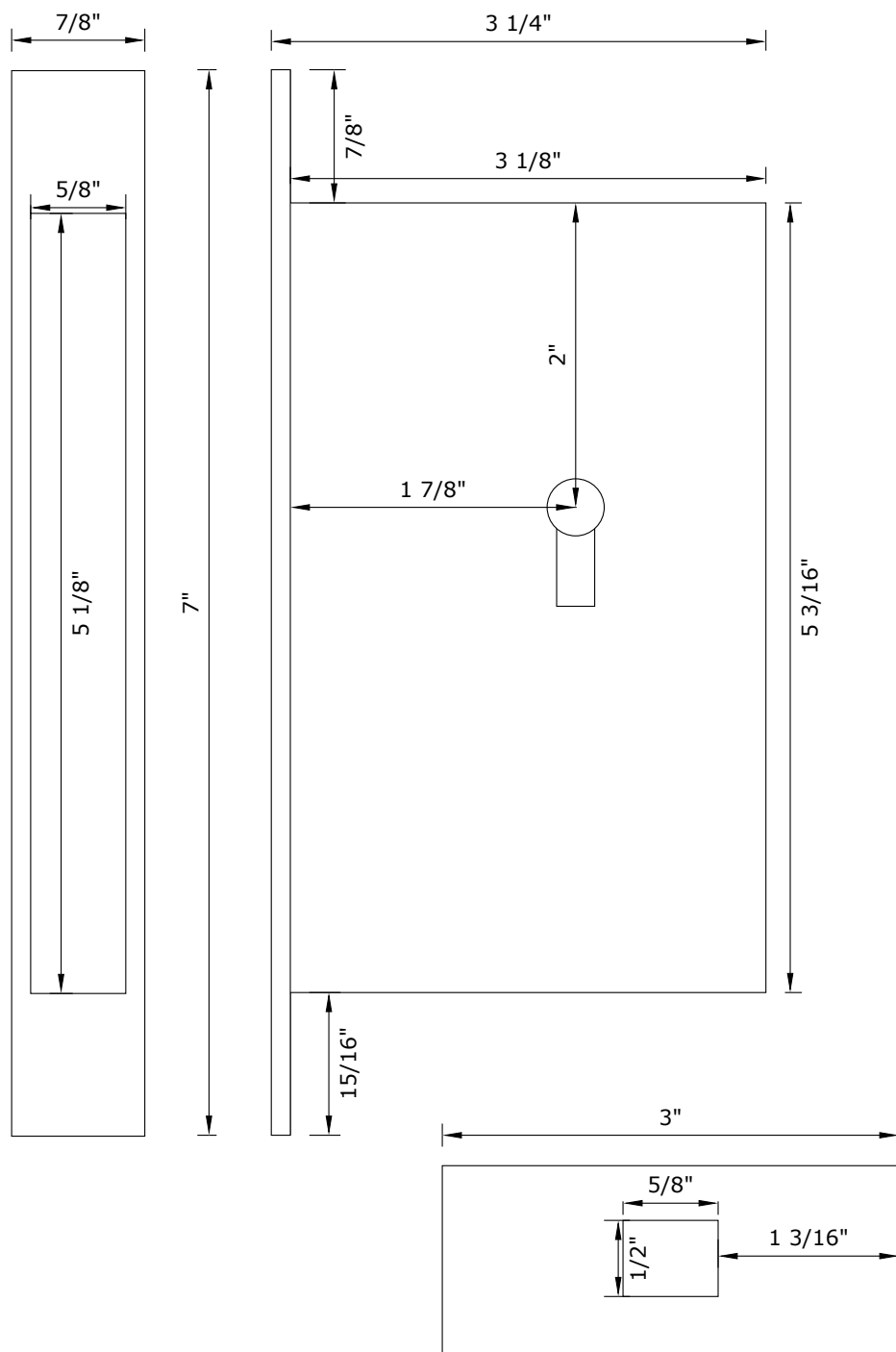


Broken Leaf Pocket Lock



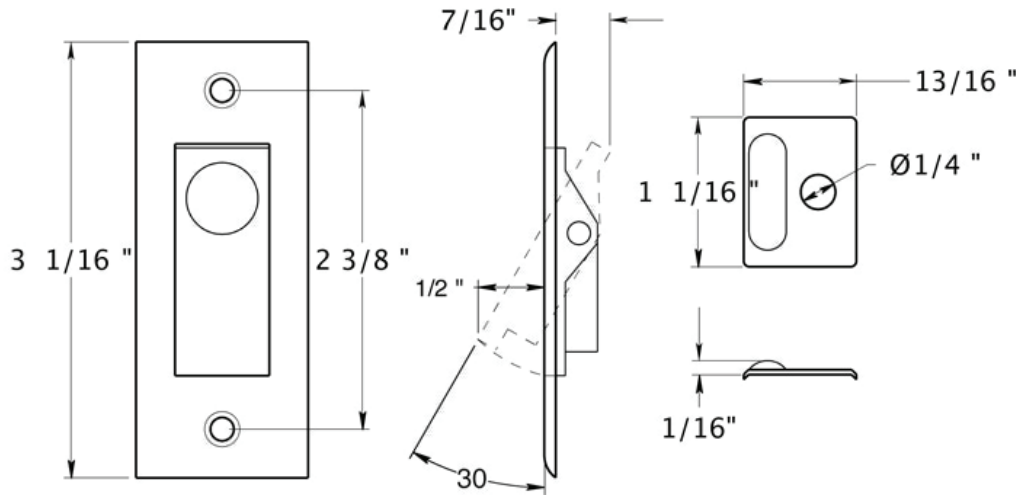


Rice Pocket Door Lock

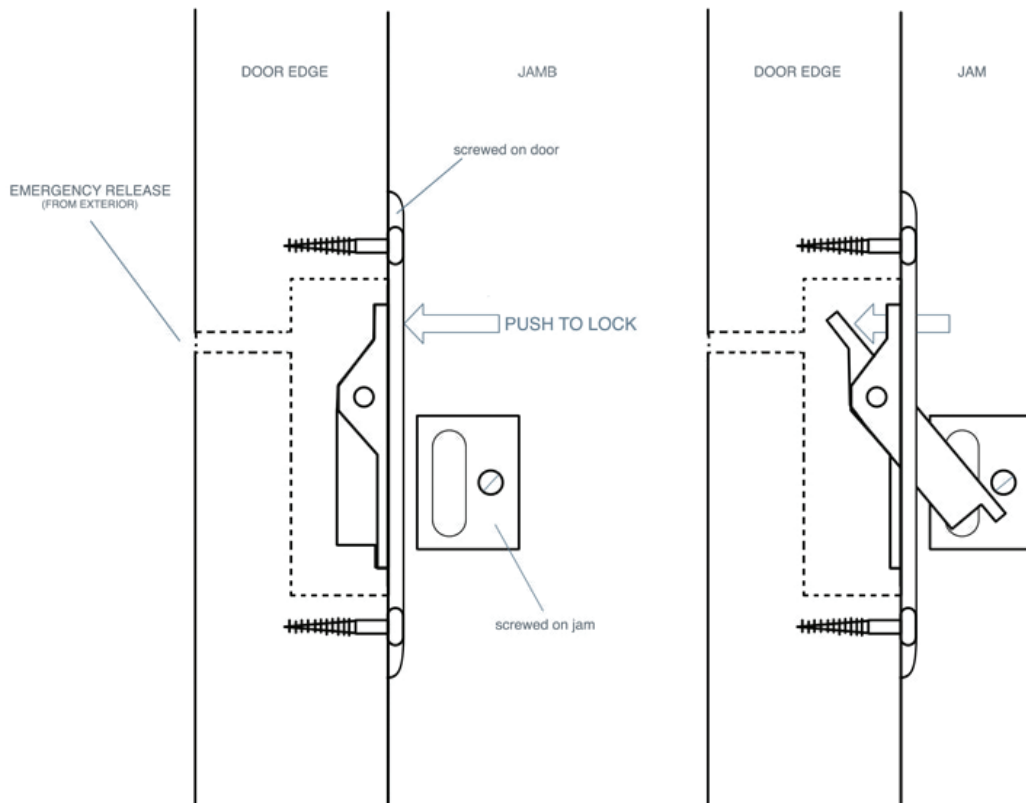




Jamb Bolt



INSTRUCTIONS

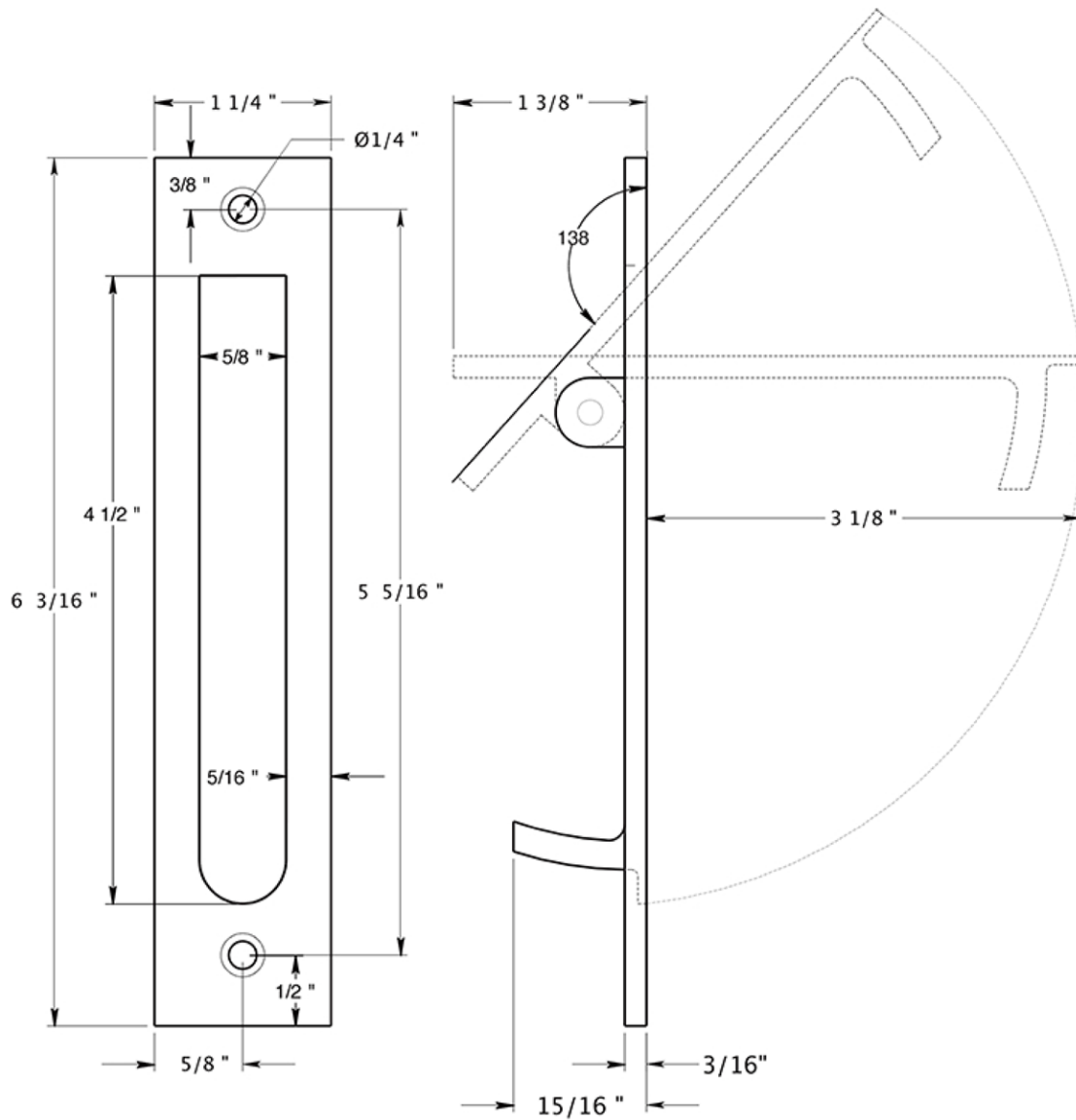


Door fully opened

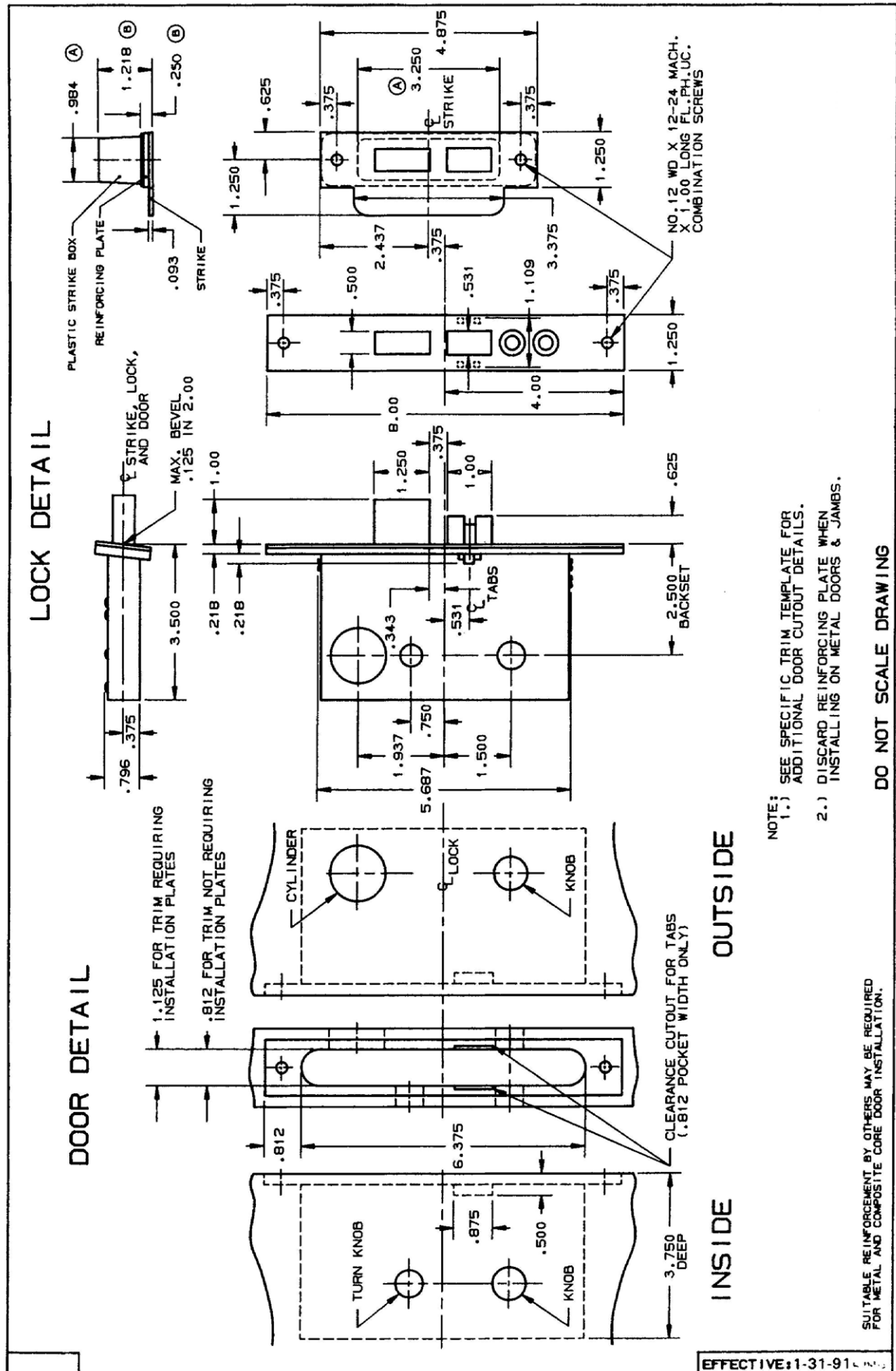
Fully closed door cannot
be pushed into pocket



Edge Pull



Baldwin Entry Lock

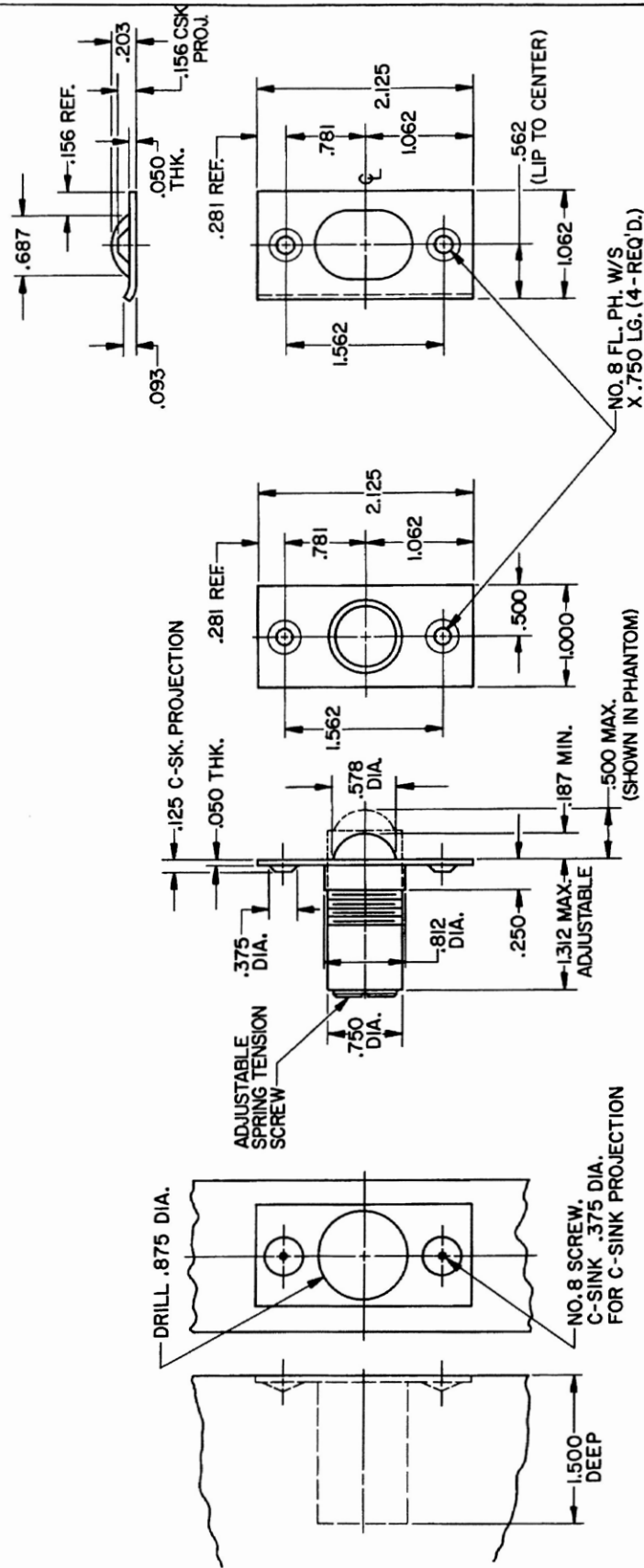


Ball Catch

DOOR DETAIL

CATCH DETAIL

STRIKE DETAIL



NOTE:
1. RECOMMENDED FOR USE WHEN CATCH IS FITTED IN THE JAMB.

EFFECTIVE: 5-1-88 R. Ad. 2

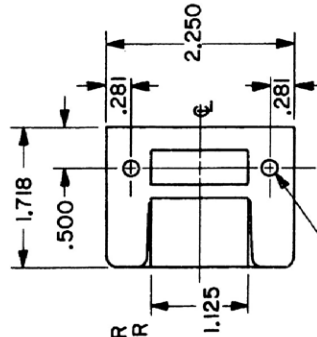
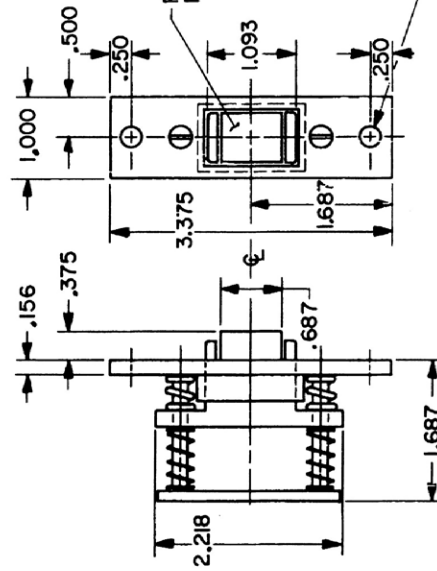
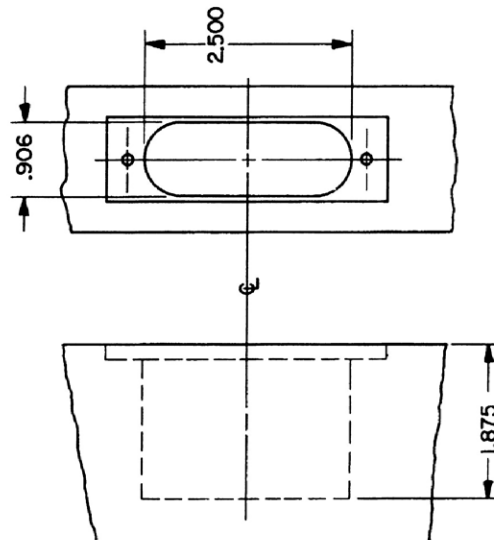
DO NOT SCALE DRAWING

Roller Catch

LATCH DETAIL



DOOR DETAIL



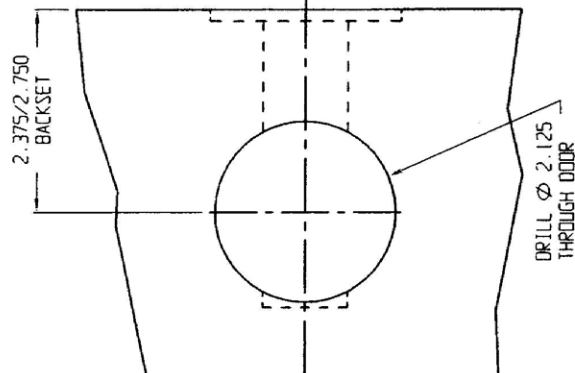
NO. 10 FL. PH. WOOD SCREW
 X 1.000 LONG (FOR WOOD DOORS)
 NO. 10-24 FL. PH. UC. MACHINE
 SCREW X .500 LONG (FOR
 METAL DOORS)

DO NOT SCALE DRAWING

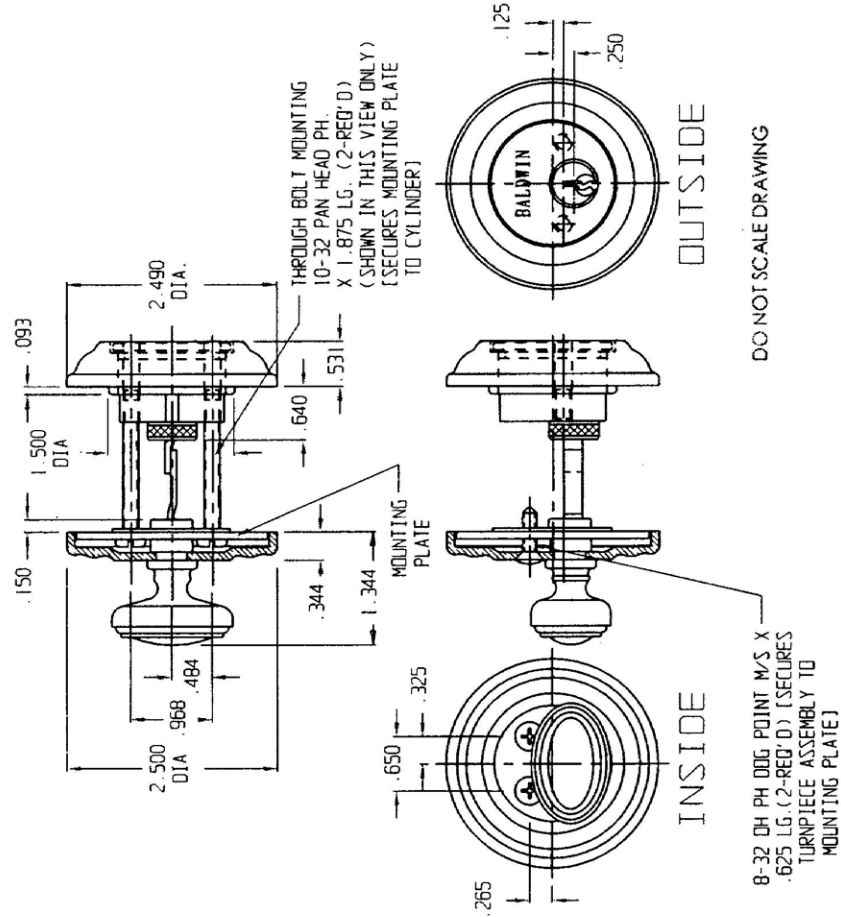
EFFECTIVE: 9-1-86 RA

Tubular Single Cylinder Deadbolt

DOOR DETAIL



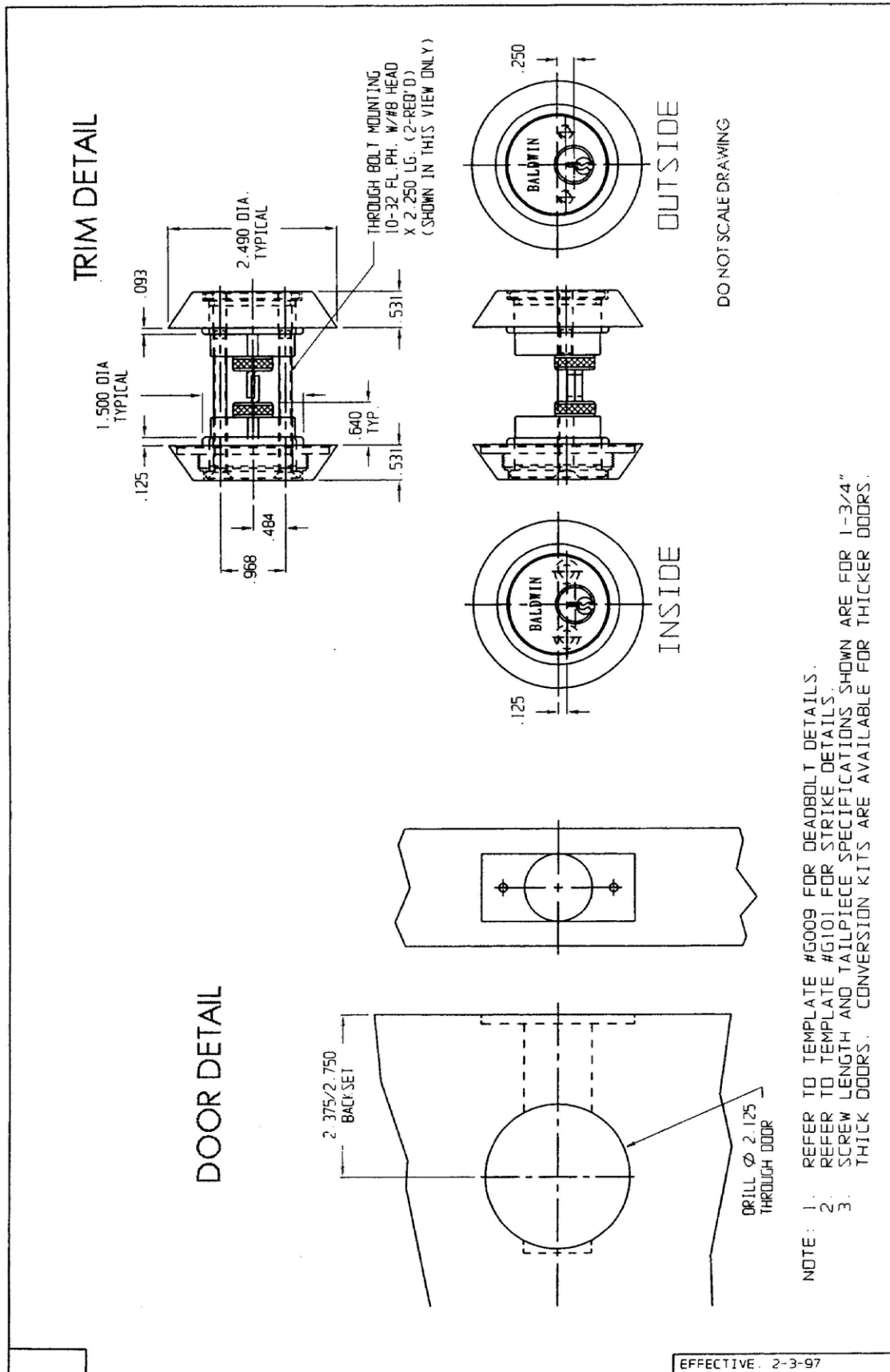
TRIM DETAIL



- NOTE:
1. REFER TO TEMPLATE #G009 FOR DEADBOLT DETAILS.
 2. REFER TO TEMPLATE #G101 FOR STRIKE DETAILS.
 3. SCREW LENGTH AND TAILPIECE SPECIFICATIONS SHOWN ARE FOR 1-3/4" THICK DOORS. CONVERSION KITS ARE AVAILABLE FOR THICKER DOORS.

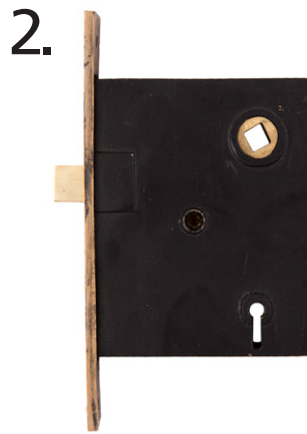
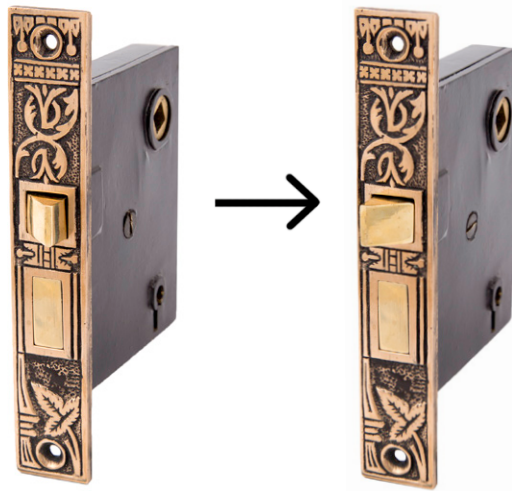
EFFECTIVE 2-3-97

Tubular Double Cylinder Deadbolt

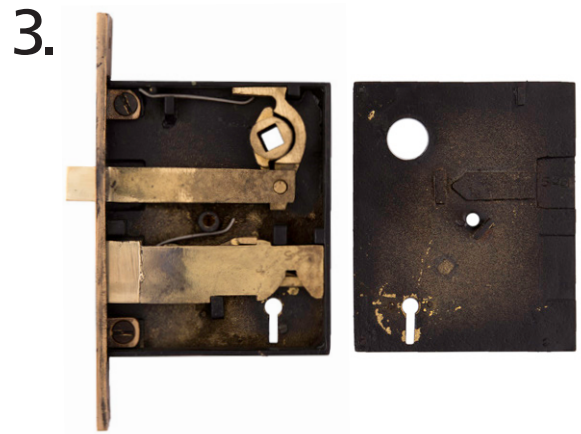




Reversible Mortise Lock Instructions



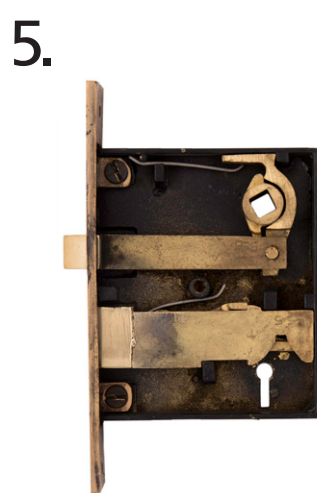
Unscrew lock cover.



Remove lock cover.



Remove lock piece and flip.



Place flipped lock piece in place



Replace lock cover.



Installation Tools

Corner Chisel



5/8" #5603 7/8" #5604

This punch converts radius corners to square corners with one single tap.

Centering Tool



#5605

After latch or lock is installed, rosettes or plates are held against door. Centering tool is passed through the plates and tightened to correctly position and mark screw holes.

Baldwin Hardware Corporation



Baldwin 2-1/2 and 2-3/4 backset Mortise locks are designed for residential use in UL-listed fire-rated openings rated for 3-hour maximum. Meets U.S. UL10C (positive pressure) and CANS-104M80. In the event of fire, lock will be permanently disabled when mechanism reaches temperatures above 400°F. Use in accordance with local fire code regulations.

Mortise Lock Installation Instructions

TOOLS REQUIRED

- | | |
|--|---|
| 1 Pencil | 9 Combination Square |
| 2 No. 2 and No. 3 Phillips Head Screwdrivers | 10 Awl |
| 3 No. 1 and No. 2 Slotted Screwdrivers | 11 Hacksaw |
| 4 1/8" Allen Head Wrench | 12 File (Wood Rasp and Metal) |
| 5 3/4" Wood Chisel or Corner Chisel | 13 Baldwin Aligning Tool |
| 6 Measuring Device | 14 Drill and assorted Drill Bits (1/16", 1/8", 5/16", 3/8", 3/4", 1", 1-1/4") |
| 7 Lock Mortising Tool (Recommended) | 15 Screw Wax or Soap |
| 8 Router and Lock Face Template | 16 Powder Chalk, Graphite or Lipstick |

Note: In order to successfully install a mortise lock and trim, a minimum of average skill level is required with use of the above listed tools.

Read and understand the provided instructions BEFORE attempting to mark or cut the door and/or frame. If there are any questions before you begin the installation, phone or visit your nearest Baldwin Distributor or contact the Technical Service Department at Baldwin at 610.777.7811.

Diagram A ENTRANCE HANDLESET

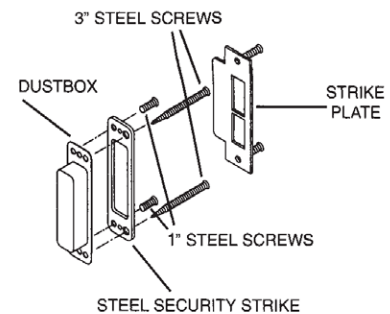
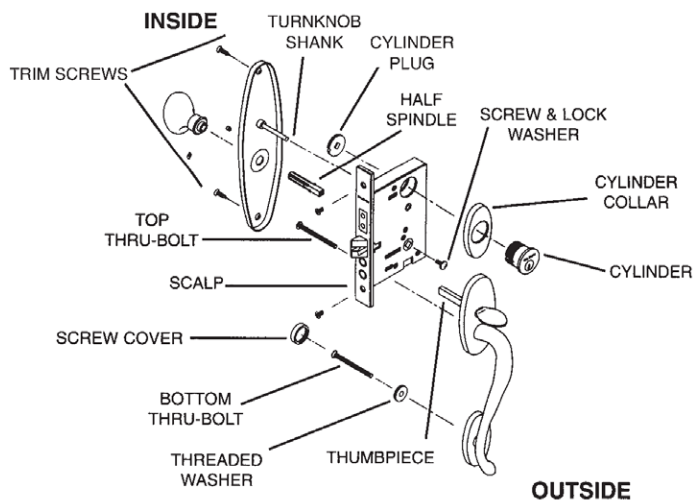
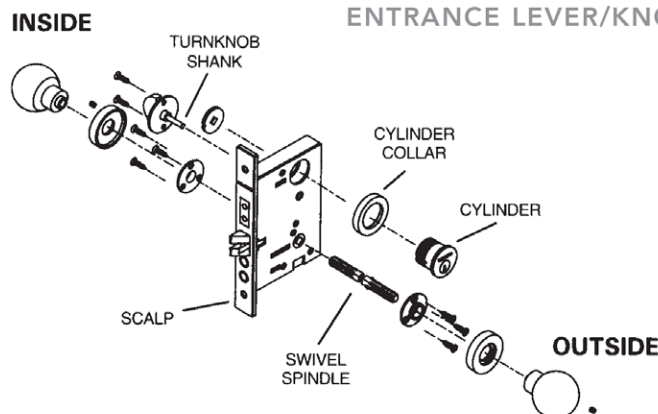
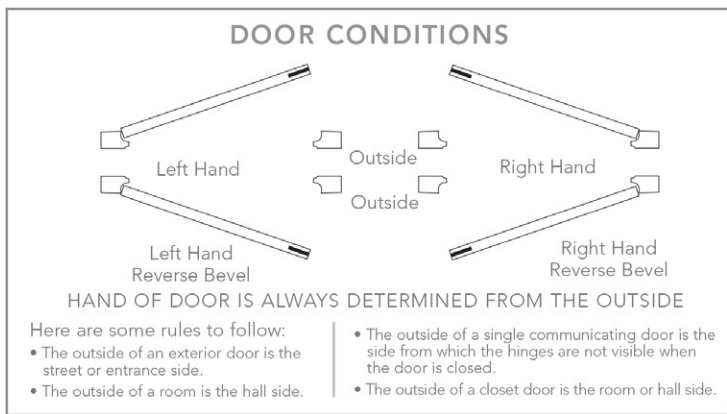


Diagram B ENTRANCE LEVER/KNOB SET



PK 1076A 8/05



GENERAL NOTES

Paper template is designed for 1-3/4" thick doors. For extra thick doors, measure backset from center of door edge. Tape supplied template to the door to locate fastener pattern for lock and trim.

When installing hardware on metal or fiberglass doors, ensure the door was designed to accommodate mortise locks. If in doubt, check with your local door distributor or door manufacturer.

Removal of hardware from doors is recommended before painting and finishing of the door. Allow paint/stain to fully cure before reinstalling hardware, usually ten days to two weeks. Check paint manufacturer instructions.

Retain these instructions in a safe place should you need to disassemble the lock trim or require Baldwin's assistance.

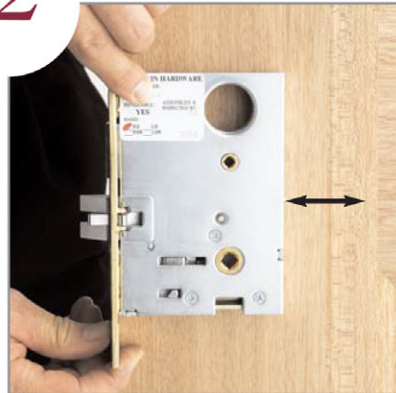
Look for doorknob on lever

1 Mark the Door



Mark the door at 37-1/2" - 40" above finished floor, or if retrofit, at appropriate location to coordinate with existing strike preparations. This will be center line of the lock and will put the knob/lever at 36" - 39" above the floor.

2 Double Check Compatibility of Door Stile & Trim



Make sure that the door stile will accommodate the intended lock.

3 Determine Hole Pattern Required for Trim on Blue Sheet

BALDWIN INSTALLATION TEMPLATE FOR RESIDENTIAL AND LISTED MORTISE

Read down left-hand column to find your Lock Number. Read across the page to determine the hole pattern required for the trim. The yellow template enclosed is to be used to transfer the hole pattern to the door.

LOCK	TRIM	TRIM
6001	INSIDE 3-4	
6075	OUTSIDE 3-4	
6077	INSIDE 3-4	
6080	OUTSIDE 2-4	
6085	INSIDE 2-4	
6095	OUTSIDE 2-4	
6096	INSIDE 2-4	
6097	OUTSIDE 2-4	
6098	INSIDE 2-4	
6099	OUTSIDE 2-4	
6100	INSIDE 2-4	
6101	OUTSIDE 2-4	
6102	INSIDE 2-4	
6103	OUTSIDE 2-4	
6104	INSIDE 2-4	
6105	OUTSIDE 2-4	
6106	INSIDE 2-4	
6107	OUTSIDE 2-4	
6108	INSIDE 2-4	
6109	OUTSIDE 2-4	
6110	INSIDE 2-4	
6111	OUTSIDE 2-4	
6112	INSIDE 2-4	
6113	OUTSIDE 2-4	
6114	INSIDE 2-4	
6115	OUTSIDE 2-4	
6116	INSIDE 2-4	
6117	OUTSIDE 2-4	
6118	INSIDE 2-4	
6119	OUTSIDE 2-4	
6120	INSIDE 2-4	
6121	OUTSIDE 2-4	
6122	INSIDE 2-4	
6123	OUTSIDE 2-4	
6124	INSIDE 2-4	
6125	OUTSIDE 2-4	
6126	INSIDE 2-4	
6127	OUTSIDE 2-4	
6128	INSIDE 2-4	
6129	OUTSIDE 2-4	
6130	INSIDE 2-4	
6131	OUTSIDE 2-4	
6132	INSIDE 2-4	
6133	OUTSIDE 2-4	
6134	INSIDE 2-4	
6135	OUTSIDE 2-4	
6136	INSIDE 2-4	
6137	OUTSIDE 2-4	
6138	INSIDE 2-4	
6139	OUTSIDE 2-4	
6140	INSIDE 2-4	
6141	OUTSIDE 2-4	
6142	INSIDE 2-4	
6143	OUTSIDE 2-4	
6144	INSIDE 2-4	
6145	OUTSIDE 2-4	
6146	INSIDE 2-4	
6147	OUTSIDE 2-4	
6148	INSIDE 2-4	
6149	OUTSIDE 2-4	
6150	INSIDE 2-4	
6151	OUTSIDE 2-4	
6152	INSIDE 2-4	
6153	OUTSIDE 2-4	
6154	INSIDE 2-4	
6155	OUTSIDE 2-4	
6156	INSIDE 2-4	
6157	OUTSIDE 2-4	
6158	INSIDE 2-4	
6159	OUTSIDE 2-4	
6160	INSIDE 2-4	
6161	OUTSIDE 2-4	
6162	INSIDE 2-4	
6163	OUTSIDE 2-4	
6164	INSIDE 2-4	
6165	OUTSIDE 2-4	
6166	INSIDE 2-4	
6167	OUTSIDE 2-4	
6168	INSIDE 2-4	
6169	OUTSIDE 2-4	
6170	INSIDE 2-4	
6171	OUTSIDE 2-4	
6172	INSIDE 2-4	
6173	OUTSIDE 2-4	
6174	INSIDE 2-4	
6175	OUTSIDE 2-4	
6176	INSIDE 2-4	
6177	OUTSIDE 2-4	
6178	INSIDE 2-4	
6179	OUTSIDE 2-4	
6180	INSIDE 2-4	
6181	OUTSIDE 2-4	
6182	INSIDE 2-4	
6183	OUTSIDE 2-4	
6184	INSIDE 2-4	
6185	OUTSIDE 2-4	
6186	INSIDE 2-4	
6187	OUTSIDE 2-4	
6188	INSIDE 2-4	
6189	OUTSIDE 2-4	
6190	INSIDE 2-4	
6191	OUTSIDE 2-4	
6192	INSIDE 2-4	
6193	OUTSIDE 2-4	
6194	INSIDE 2-4	
6195	OUTSIDE 2-4	
6196	INSIDE 2-4	
6197	OUTSIDE 2-4	
6198	INSIDE 2-4	
6199	OUTSIDE 2-4	
6200	INSIDE 2-4	

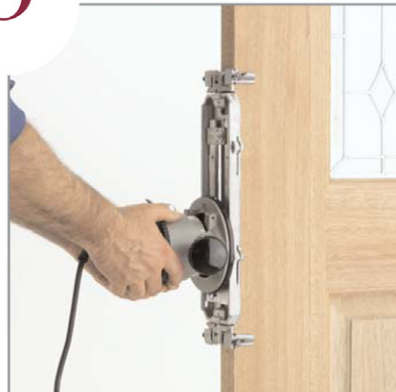
Determine hole pattern required for trim using **Installation Template Guide Chart** (blue sheet shown). Mark the listed holes on the **yellow lock template** (figure 7) enclosed with the lock. Ensure trim will not interfere with door stop or extend over door panel or glass.

4 Mortise Lock Pocket For Lock Body



Mortise the pocket in the door 1/8" deeper than the lock being installed. Refer to the **Installation Template Guide Chart** (blue sheet) for exact size of mortise pocket.

5^A Prepare for Lock Front



Rout for the lock front.

5^B Prepare for Lock Front



Square the Corners.

6

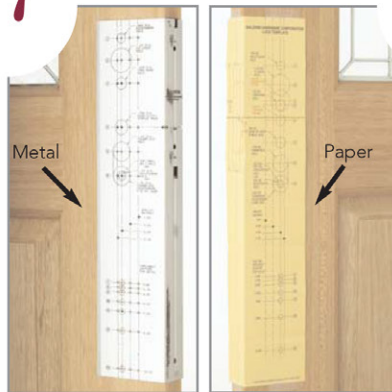
Cut Relief Pockets



Cut the relief pockets 3/8" deep on both sides for the Latch Hinge, 2-1/2" and 2-3/4" backset only. (Does not apply for 1" front.)

7

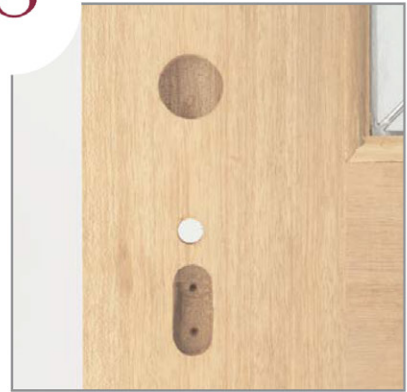
Mark Door



For 1-3/4" doors, fold the **yellow lock template** and attach to door using [Installation Template Guide](#). Mark door at appropriate locations for lock and trim. **MARK APPROPRIATE BACKSET.** (Extra thick door conditions, see General Notes.) Metal template 8498.000 is available for purchase.

8

Drill Holes



Drill appropriate holes as indicated on yellow lock template. **DO NOT OVERSIZE HOLES.** Only top two holes are drilled for knob to knob and lever to lever sets.

9

Install Cylinder Plug



Thread the cylinder plug into interior side of lock. Place a strip of tape over plug to keep it from turning. Notch must be located as shown. (Double cylinder functions: OMIT THIS STEP.)

10

Install Lock



Drill two pilot holes for the lock face, adjust the bevel and install the lock. Shim between the lock and door on cylinder side as shown to prohibit the cylinder from pulling the lock case off center. (Failure to shim the lock may cause the cylinder to sit unevenly on the surface of the trim.)

11

Insert Spindle



For handleset trim install the spindle from the inside with V groove facing bottom door hinge and thread the screw and lock washer into the spindle from the outside. Tighten securely. For knob to knob and lever to lever sets, install spindle from outside - go to step 13.

12

Size Thumbpiece



Cut the thumbpiece so that it will fully engage the lift lever on the bottom of the lock.

13

Install Cylinder



Place the cylinder through the trim. Partially insert key into cylinder. Thread the cylinder into the lock until it is against the trim and Baldwin name is horizontal. For knob to knob and lever to lever sets - Install aligning bushing and fasten trim with supplied screws. Remove bushing - go to step 16.

14

Install Thru-Bolts



Start the thru-bolts which will hold the exterior trim. (Use screw cover washer under the bottom thru-bolt.) Tighten both securely.

15 Size & Cut Thumbturn



Cut the thumbturn tailpiece so that it goes halfway through the lock (as in step 12).

16 Install Interior Trim



Place the interior trim on the door. Slide the aligning bushing onto the spindle so it fits into the knob hole. Drill pilot holes and fasten interior trim with supplied fasteners. Remove bushing and discard.

17 Complete Trim Installation



Start the set screw before sliding the knob or lever onto the spindle. Slide knob or lever onto the spindle and tighten securely. For knob to knob and lever to lever sets - install both sides - go to step 19.

18 Install Screw Cover



Thread decorative screw cover onto threaded washer.

19 Tighten Cylinder Set Screw



Tighten the cylinder set screw by turning clockwise. **Do not over tighten. Do not use a power screw driver.**

20 Install Armor Front



Install the armor front with the small phillips head screws supplied.

21 *Mark and Mortise Jamb for Strike Location



Mark the Jamb for the proper strike location. Coat extended latch bolt with graphite, powdered chalk or lipstick. Retract the bolt, close the door and actuate the knob or lever several times to mark the jamb. Add approximately 1/32" clearance from that mark.

22 Install Dust Box & Security Strike



Drill pilot holes for security strike and relief holes for finished strike. Install dust box and security strike with 1" and 3" screws on the stop side of the plate. Note: Security Strikes are supplied only with locks which utilize cylinders.

23 Install Strike Plate

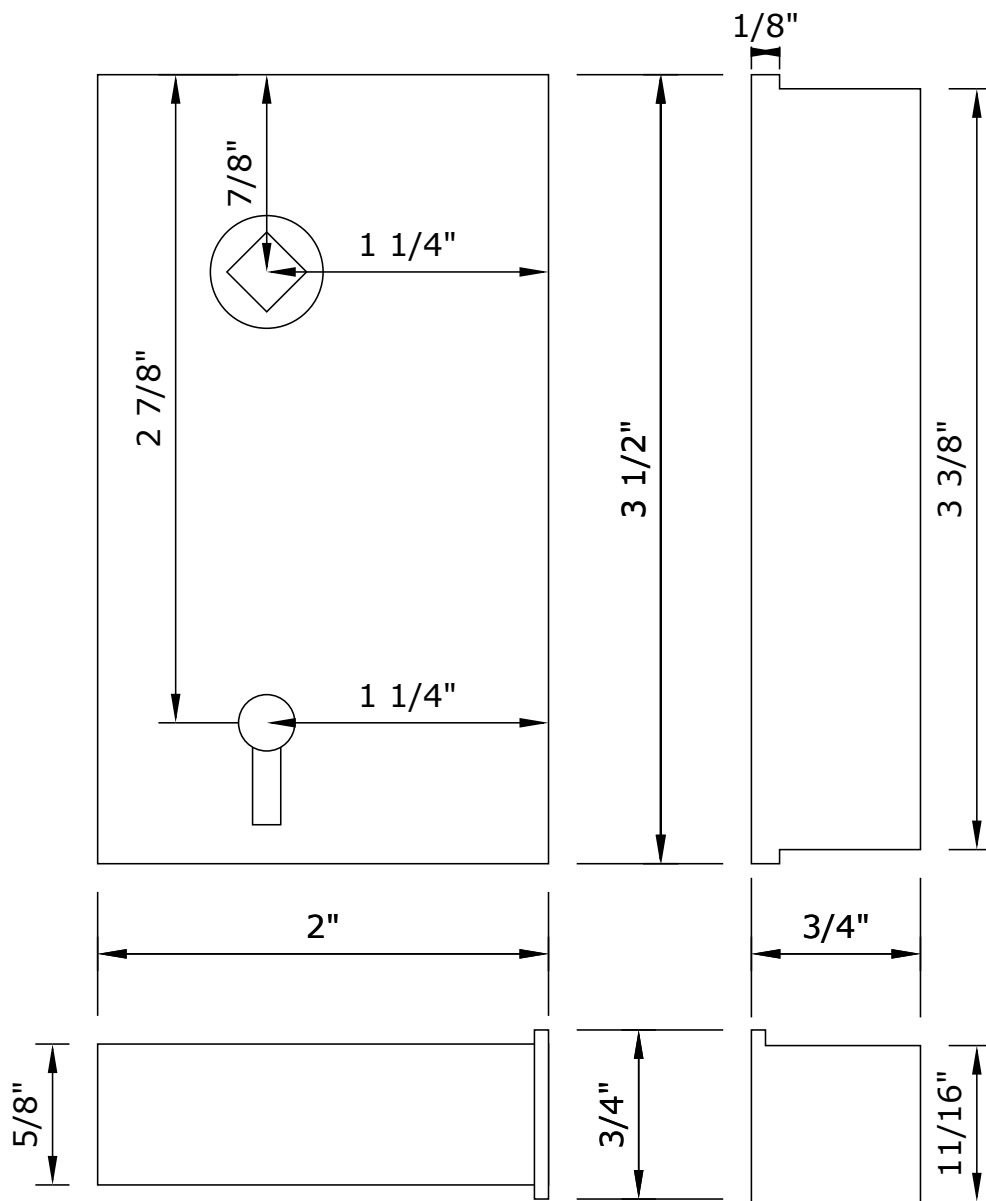


Install strike plate with supplied machine screws.

*** APPLY ANY WEATHERSTRIPPING BEFORE STRIKE HAS BEEN INSTALLED.**

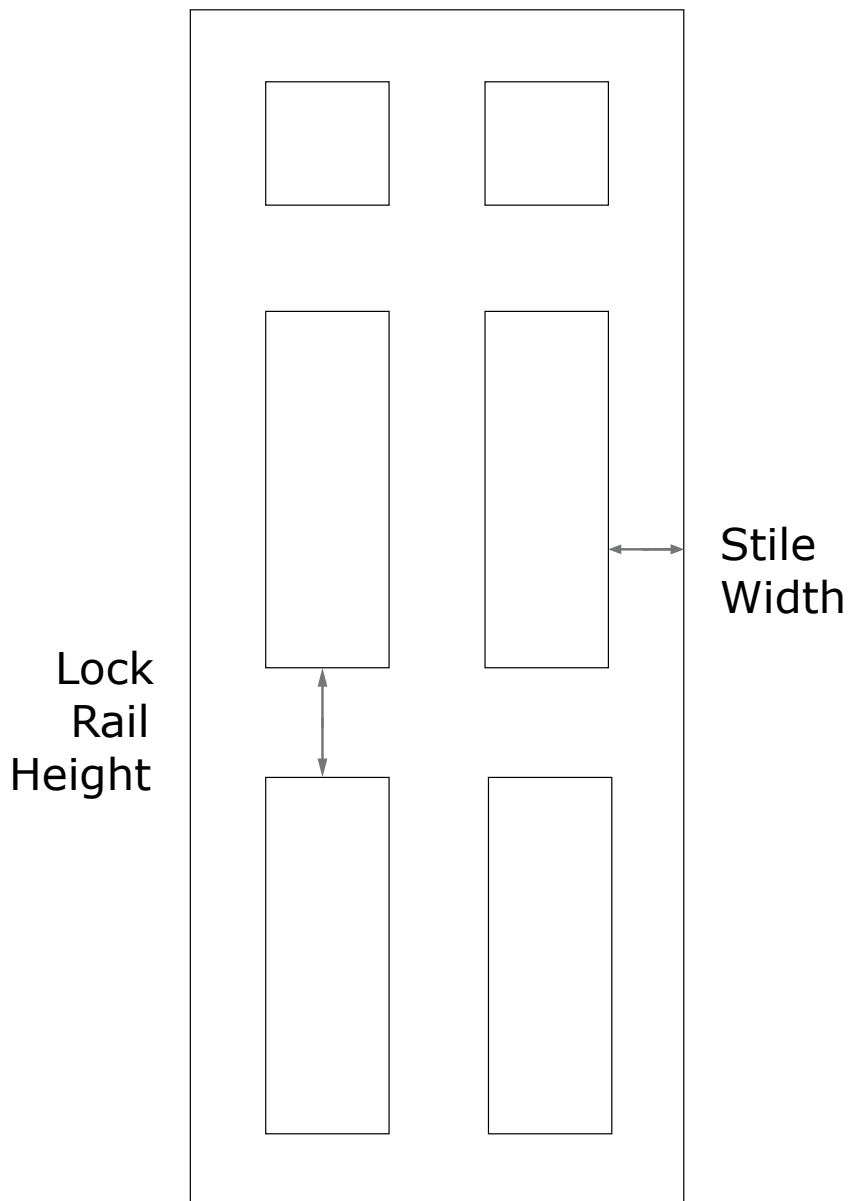


Narrow French Door Rim Lock





Door Dimensions for Hardware Placement



Backset equals half of the width of stile.
Lock Rail is where lock or latch is placed.